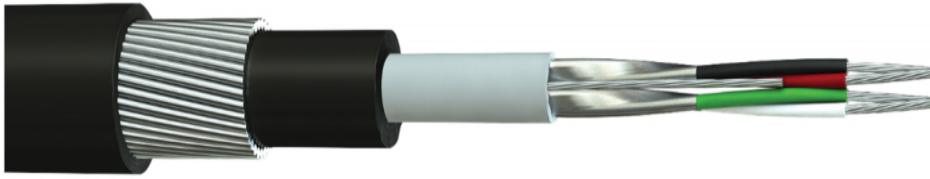


8723 - SWA/LSZH Alternative Cable



CABLE MAKE-UP

Conductor Count: 4

Conductor Stranding
Class 2 stranded tinned copper conductor

Core Identification:

Pair 1: Red & Black

Pair 2: Green & White

Insulation

PE (Polyethylene)

Screen

Aluminum foil tape

Drain Wire

Stranded tinned copper

Sheath

LSZH (Low Smoke Zero Halogen)
Sheath Color: Black

APPLICATION

Steel Wire Armored - Individually screened two pair data Cable 22AWG, alternative to Belden 8723. These cables are used extensively in the security industry for CCTV applications including telemetry. Also suitable for computer and instrumentation applications where it is important to provide a high level of screening from external sources, together with low levels of cross talk between pairs.

DESCRIPTION

2 x 2 x 22(7)AWG Individually Screened

SWA - Steel Wire Armored

For use in audio, control & instrumentation

Individually Shielded:
(100% Coverage)

STANDARDS

CPR Classification
Eca

RoHS2 Compliance:
Yes

Flame Retardant:
EN 60332-1-2

UV & Weather Resistant

CHARACTERISTICS

Voltage Rating
300V

Temperature Rating
Fixed: -20°C to +80°C

Test Voltage:
2.5kV for 5 minutes

- ✓ Genuine Alternative to Belden 8723
- ✓ 100% Individually Shielded Pairs
- ✓ Cut to Length Service Available

DIMENSIONS

PART NO.	NO. OF PAIRS	AWG (NO. OF STRANDS)	NOMINAL DIAMETER OF STRANDS mm	NOMINAL OVERALL DIAMETER mm	NOMINAL WEIGHT kg/km
8723SWA	2	AWG22(7)	0.25	8	210

ELECTRICAL CHARACTERISTICS

PART NO.	CAPACITANCE AT 1kHz pF/m	MAXIMUM RESISTANCE OF CONDUCTOR AT 20°C ohms/km
8723SWA	114.8	65.5